



LEXIS SCHOOLS

Parent Handbook

Jan 2024





**SCHOOL
OF THE
FUTURE**

A Unique Approach to Education

Welcome to Lexis School, where we focus on nurturing every child's **intrinsic motivation** for **lifelong learning**. We embrace a system where **curiosity and exploration** take center stage. Our methods are based on evidence that highlights the importance of **interest-led and self-directed learning**.



CURRICULUM

Our curriculum is built with the spirit of Ubuntu and interdependence; it is designed to cultivate a mindset where learners contribute positively at individual, community, national, and global levels, focusing on collective well-being and sustainable progress.

Our **Global African curriculum** is a transformative force in an educational landscape craving cultural relevance & adaptability.

It represents an evolution in teaching and learning, uniquely **attuned to our diverse contexts, distinct realities on the ground & unfolding global repositioning.**

Dedication to Innovation & Excellence

Reflecting our unwavering commitment to **self-directed education** (a pathway strongly recommended by NEASC).

Educational Quality


Enhancing teaching and learning practices.

Continuous Improvement

Committing to ongoing educational excellence.

Global Recognition

Elevating our school's international standing.



We are in the process of international accreditation with **NEASC** (New England Association of Schools and Colleges) to ensure provision of an exceptional educational experience.



WHAT WE AIM FOR

Embracing Natural Curiosity

Our ethos is rooted in the belief that the same drive a child displays when learning to walk, talk, and interact should be harnessed throughout their education. We see the child's **innate capability for learning** as a sacred gift that should be nurtured.

We're transforming education to prepare children for a fast-changing future. In an era where technology and knowledge are fingertips away, we emphasize critical thinking, curiosity, identity and individual talents & passions.

We admit **ages 2 to 12** adding one group every school year to ensure education **up to the age of 18** for our children.




HOW WE DO IT

★ **Child-centered and Self-Directed Learning**


Your child charts their own educational journey. With guidance from parents and teachers, students set their goals & needs and measure their outcomes. This approach empowers them to be creators and innovators, setting them up for success in the rapidly evolving world. Play and exploration are at the heart of our approach, ensuring holistic growth.

★ **Democratic Process**



At Lexis, every voice matters. We actively engage students in rule-making, decision-making, and in building a supportive community. Through school gatherings, we foster a democratic spirit and collaborative environment with the aim to positively impact society at large.



ACADEMIC FOCUS



While academic knowledge is vital, we emphasize the importance of **timing and readiness**. We believe in introducing abstract concepts only when the child is developmentally ready. Our approach is backed by neuroscience and is similar to teaching methodologies in world-leading educational systems like those in Scandinavia.



THIS LEADS TO..

Our unique approach integrates scholastic knowledge into the child's personal journey and interests.

As a result, Lexis graduates stand out in any work environment. Their excellent **communication skills, confidence, and collaborative spirit** will make them highly sought after.

Evidence shows that an interest-led, self-directed education fosters better mental health and career choices consistent with aspirations and purpose.

Self-directed learners cultivate their unique human qualities and become creators, rather than mere consumers, entrepreneurs rather than employees.



TEACHERS AT LEXIS

Our educators are not just teachers; more accurately they are life coaches and facilitators.

Chosen for their ability to nurture each child's quest for knowledge, our teachers are trained to observe, assist, and respect every child's learning journey. Their goal is to ensure every student is engaged, setting goals, learning to their strengths, and fostering their passions.





ASSESSMENT WITHOUT PRESSURE

Why No Exams?

We prioritize individual growth over competition. Instead of traditional grading systems, our assessment focuses on progress, presentations, and portfolios. We regularly update parents on activities and learning experiences, ensuring you're always in the loop.



LEARNING FROM EXPERTS

Beyond the Classroom

We offer project-based learning, where students tackle complex problems that require critical thinking. We have many experts who come and engage with the children in science & engineering, cartography, film making, entrepreneurship, psychology, wellness, etc. and we encourage learning outside the classroom through educational visits.



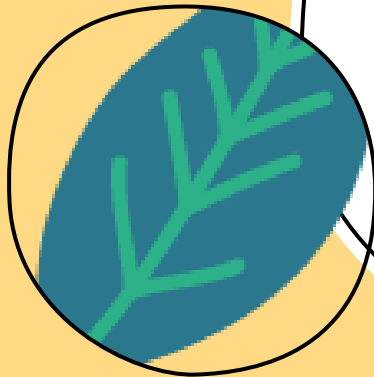
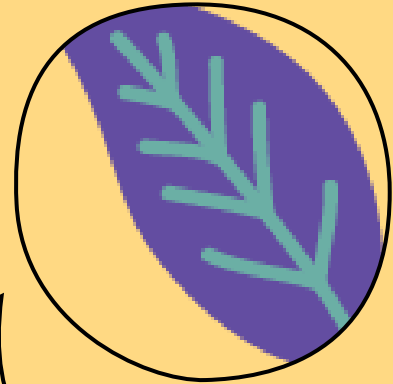
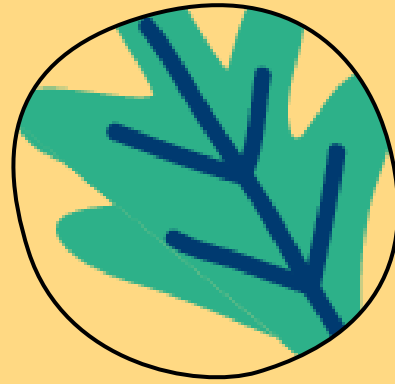
HOME AWAY FROM HOME

Small groups

To ensure a very personalized learning experience we have small groups who spend their mornings in their homebase before venturing out further.

Home cooked meals

We prepare snacks and meals on site for a balanced diet.



Mon	FILM & PHOTOGRAPHY 2 PM - 3 PM	ROBOTICS 2:30 PM - 3:45 PM	SKATEBOARDING 4 PM - 5 PM
Tue	KISWAHILI 2 PM - 3 PM	GERMAN 3 PM - 4:30 PM	ITALIAN 4 PM - 5 PM
Wed	JAPANESE 2:30 PM - 3:30 PM	ART CLUB 2:30 PM - 3:30 PM	ITALIAN 4:30 PM - 5:30 PM
Thu	KARATE 2:30 PM - 3:30 PM	DRONE & VR CLUB 2:30 PM - 3:30 PM	CAKE DECORATING 3:30 PM - 4:30 PM
Fri	STEM ZONE 2 PM - 3 PM	SPANISH 2 PM - 3 PM	MUDA DANCE CLUB 3 PM - 4 PM

EXTRA-CURRICULAR LEARNING

We offer a diverse range of afternoon activities. These intentionally foster creativity and talents, help children gain strength and confidence and learn a wide range of skills.

Languages taught currently besides English and Swahili: German, Italian, Japanese, Spanish, ~~French~~ & Portuguese





ADMISSION & TRANSITIONS

While we don't assess children seeking admission, we do engage with parents/guardians in an interview. This helps ensure alignment with our educational philosophy.

Transitioning Between Schools

Whether it's moving countries or switching schools, transitions are smooth at Lexis. We provide detailed reports to the new school and help prepare children for the change.



OUR SCHOOL CALENDAR 2024/25

January - March term

beginning of term: 13th January 2025
end of term: 14th March 2025

April - June term

beginning of term: 24th March 2025
end of term: 13th June 2025

August - September term

beginning of term: 11th August 2025
end of term: 10th October 2025

October - December term

beginning of term: 20th October 2025
end of term: 17th December 2025

Teacher Development Days:

- 10th January 2025
- 2nd May 2025
- 14th November 2025
(no school for students)

In Service Days (for school staff):

- 6th to 9th January 2025
- 20th and 21st March 2025
- 5th to 7th August 2025
- 16th and 17th October 2025

- Saturdays, Sundays and public holidays
- school closed
- beginning/end of term
- holiday camp

	Mo	Tue	Wed	Thu	Fri	Sat	Sun
Jan-25			1	2	3	4	5
	6	7	8	9	10	11	12
	13	14	15	16	17	18	19
	20	21	22	23	24	25	26
	27	28	29	30	31		
Feb-25						1	2
	3	4	5	6	7	8	9
	10	11	12	13	14	15	16
	17	18	19	20	21	22	23
	24	25	26	27	28		
Mar-25						1	2
	3	4	5	6	7	8	9
	10	11	12	13	14	15	16
	17	18	19	20	21	22	23
	24	25	26	27	28	29	30
	31						
Apr-25		1	2	3	4	5	6
	7	8	9	10	11	12	13
	14	15	16	17	18	19	20
	21	22	23	24	25	26	27
	28	29	30				
May-25				1	2	3	4
	5	6	7	8	9	10	11
	12	13	14	15	16	17	18
	19	20	21	22	23	24	25
	26	27	28	29	30	31	
Jun-25							1
	2	3	4	5	6	7	8
	9	10	11	12	13	14	15
	16	17	18	19	20	21	22
	23	24	25	26	27	28	29
	30						

	Mo	Tue	Wed	Thu	Fri	Sat	Sun
Jul-25		1	2	3	4	5	6
	7	8	9	10	11	12	13
	14	15	16	17	18	19	20
	21	22	23	24	25	26	27
	28	29	30	31			
Aug-25					1	2	3
	4	5	6	7	8	9	10
	11	12	13	14	15	16	17
	18	19	20	21	22	23	24
	25	26	27	28	29	30	31
Sep-25	1	2	3	4	5	6	7
	8	9	10	11	12	13	14
	15	16	17	18	19	20	21
	22	23	24	25	26	27	28
	29	30					
Oct-25			1	2	3	4	5
	6	7	8	9	10	11	12
	13	14	15	16	17	18	19
	20	21	22	23	24	25	26
	27	28	29	30	31		
Nov-25						1	2
	3	4	5	6	7	8	9
	10	11	12	13	14	15	16
	17	18	19	20	21	22	23
	24	25	26	27	28	29	30
Dec-25	1	2	3	4	5	6	7
	8	9	10	11	12	13	14
	15	16	17	18	19	20	21
	22	23	24	25	26	27	28
	29	30	31				

- Instructional Days: 179
- Teacher Dev. Days: 3
- In Service Days: 12
- Days in Term 1: 45
- Days in Term 2: 49
- Days in Term 3: 44
- Days in Term 4: 41

Afternoon Stay and Play Program

LOCATION: KINDERGARTEN CAMPUS

With Teacher Dorcus & Margreth

Reach Us at:

+255 692 036 594

+255 657 261 871

Activities include:

- Arts and craft
- Sport games
- Swahili games
- Singing
- Sensory activities
- Cooking
- Water and mud play
- Experiments

Transport with a trusted car accompanied by a Teacher

Snacks and Drinking water will be provided
(fruits,yoghurt,bread rolls etc...)

Cost including transport,snacks and materials:
30,000/= per afternoon (flat rate also if child is dropped later/ picked up earlier)



Staying Connected

Lexis values the parent-school relationship. Through regular reports, meetings, events and consistent communication, we ensure **parents are actively involved** in their child's educational journey. Our doors are always open for discussions, suggestions and any concerns.



COMMUNICATION & PARENTAL INVOLVEMENT



IN CLOSING

We believe in a world where learning is a **joyful, lifelong journey**. At Lexis, we're committed to ensuring your child thrives, not just academically, but as a well-rounded individual ready to take on the world.

Thank you for being a part of our community.



For more detailed insights on any section, please feel free to reach out to us or visit our school premises. We're always here to assist and inform.